

EuroBoundaryMap (EBM)

- **Scale** : 1: 100 000.
- **Themes**: geometry, names and codes of administrative and statistical units.
- **License**: non-open.
- **Production**: data providers transform national data to EBM specifications, production manager BKG Germany consolidates contributions to one open pan-European dataset.
- **Access**: license for a fee with EuroGeographics, distributors, or value-added reseller.
- **More information**:
<https://eurogeographics.org/maps-for-europe/ebm/>



EuroRegionalMap (ERM)

- **Scale**: 1: 250 000.
- **Themes**: administrative boundaries, hydrography, miscellaneous, named location, settlement, transportation, vegetation and soils.
- **License**: mostly open, but with 4 non-open countries (Bulgaria, Hungary, Romania and Serbia).
- **Production**: data providers transform national data to ERM specifications and sign a FLA Annex, regional coordinators oversees regional harmonization, edge-matching and quality control, production manager BKG Germany consolidates contributions to one pan European dataset.
- **Access**: open data for download or API at <https://www.mapsforeurope.org/access-data>, non-open only available for existing users licensing for a fee.
- **More information**:
<https://www.mapsforeurope.org/datasets/euro-regional-map>



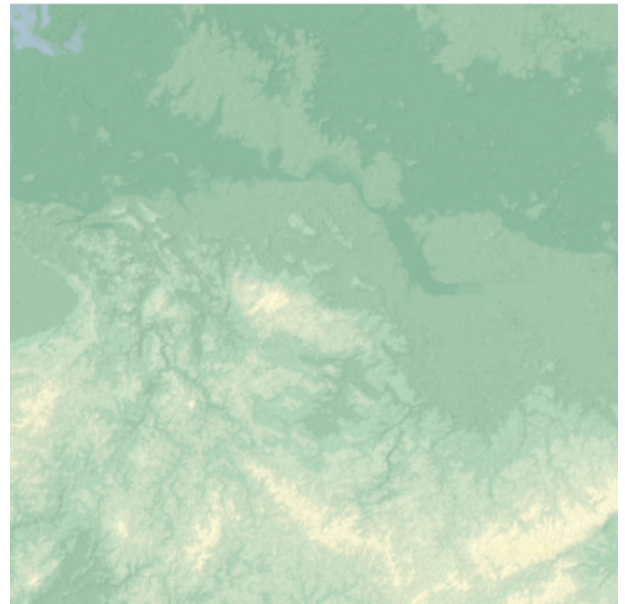
Open Gazetteer

- **No scale.**
- **Themes:** administrative boundaries, hydrography, named location, protected sites, settlement, transportation.
- **License:** open.
- **Production:** data based on EBM and ERM data. Members that provide data for EBM and/or ERM need only to sign a FLA Annex for inclusion in Open Gazetteer. Database is additionally enriched by geographical name expert.
- **Access:** download and API at <https://www.mapsforeurope.org/access-data>
- **More information:** <https://www.mapsforeurope.org/datasets/open-gazetteer>



EuroDEM

- **Scale:** 1: 100 000.
- **Themes:** digital elevation.
- **License:** open.
- **Production:** members provide their data and sign a FLA Annex, production manager BKG consolidates data provisions from members and infills missing countries with MERIT data.
- **Access:** download and API at <https://www.mapsforeurope.org/access-data>
- **More information:** <https://www.mapsforeurope.org/datasets/euro-dem>



Open Cadastral Map

- **Scales:**
 Administrative Units national to municipal
 Cadastral Parcels / zones from 1:100- 1:10000
 Buildings 1:100 - 1:10000
 Addresses 1:100 - 1:2000
- **Themes:** administrative boundaries, cadastral parcels (and cadastral zones), buildings (and building parts) and addresses.
- **License:** open.
- **Production:** members provide national data as INSPIRE compliant zipped GML files via AtomFeeds, subcontractor Idox France consolidates contributions to one data service, no FLA Annex needed.
- **Access:** WMS/WMTS at <https://www.mapsforeurope.org/access-data>
- **More information:** <https://www.mapsforeurope.org/datasets/cadastral-all>



EuroGlobalMap

- **Scale:** 1: 1 000 000.
- **Themes:** administrative boundaries, hydrography, named location, settlement, transportation.
- **License:** open.
- **Production:** based on EBM and ERM, consolidated and generalized by production manager IGN France. To contribute, members only need to provide data to ERM and EBM, an additional FLA Annex needed.
- **Access:** download and API at <https://www.mapsforeurope.org/access-data>
- **More information:** <https://www.mapsforeurope.org/datasets/euro-global-map>



Pan-European Imagery

- **Resolution:** 10 meter.
- **Imagery Data:** sentinel-2 data from the European Union's Copernicus Earth observation programme in a time series for 2018 and 2021.
- **License:** open.
- **Production:** Production manager BKG produces this data service, no actions needed from members.
- **Access:** API at <https://www.mapsforeurope.org/access-data>
- **More information:** <https://www.mapsforeurope.org/datasets/pan-european-imagery>



High-value large-scale pan-European prototype

- **Scale:** 1: 10 000.
- **Themes:** administrative units, transportation.
- **License:** open.
- **Production:** Members indicate how to access their national data, fill in a mapping table for conversion to the specification for the high-value large scale prototype, provide a technical contact, and sign a FLA Annex. Production manager IGN France harmonizes and edge-matches the contributions into one dataset.
- **Access:** API at <https://www.mapsforeurope.org/access-data>
- **More information:** <https://www.mapsforeurope.org/datasets/hvlsp>

