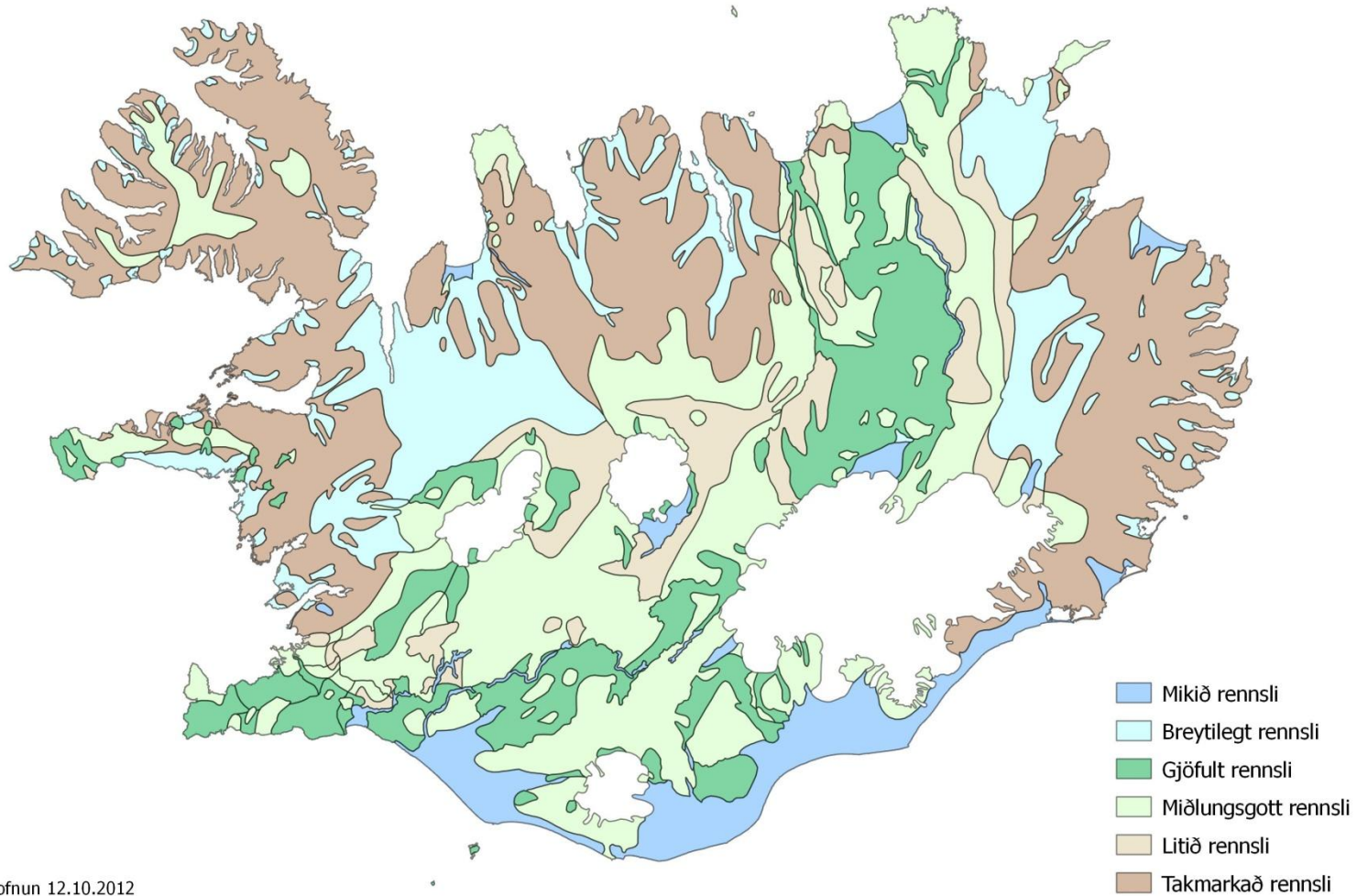


Grunnvatnshlot



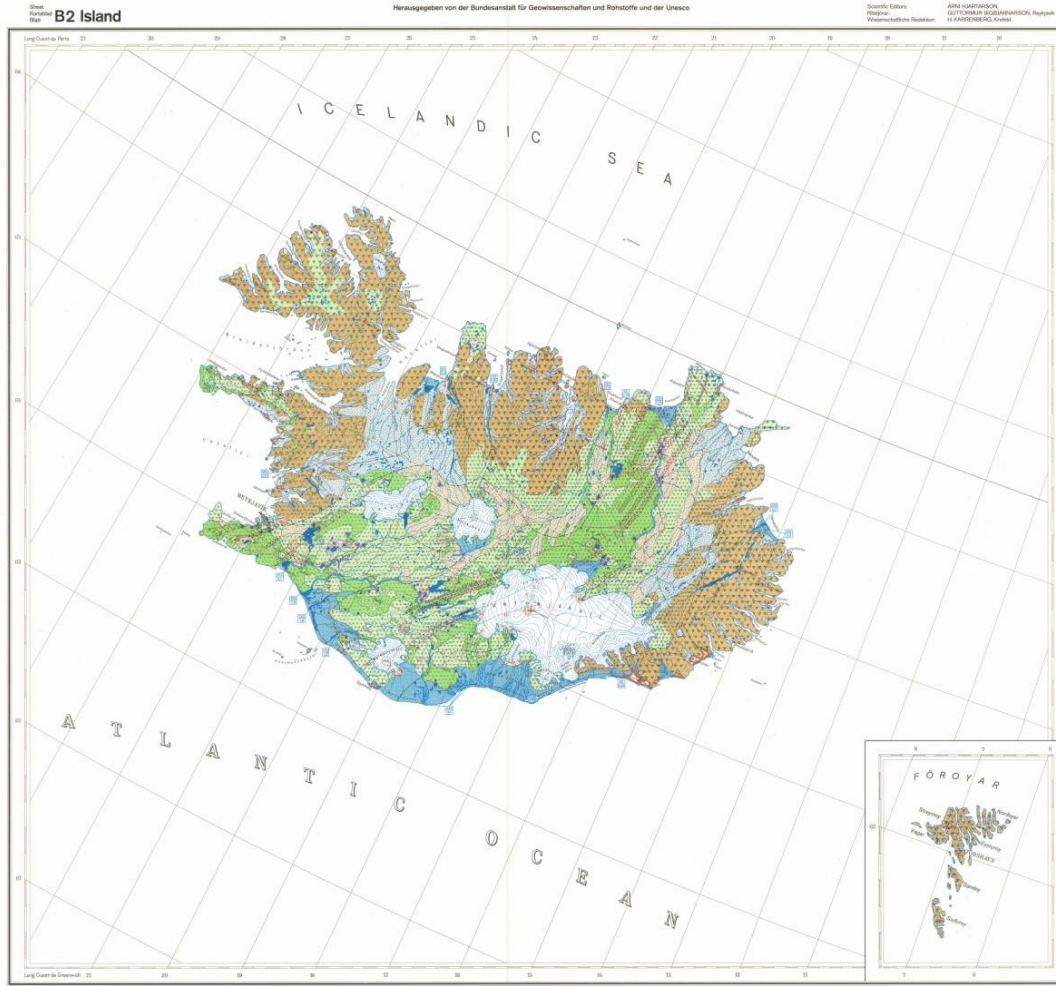
Orkustofnun 12.10.2012

Internationale Hydrogeologische Karte von Europa

Internationale Association der Hydrogeologen Kommission für die Geologische Karte der Welt
 Herausgegeben von der Bundesanstalt für Geowissenschaften und Rohstoffe und der Unesco

Scientific Editors: ANNA HARTMANN, DITTMAR B. BUCHHEITEN, RUDOLF W. WILHELM
 Regional Editor: H. KAPTEINUS, Groningen

Sheet No. B2
B2 Island
 Occurrence of groundwater - Grunnvatn - Grundvattensorkommt



- I. Areas with groundwater resources worth mentioning**
 Grunnvatn er tilgjaflegt og er tilgjaflegt
 Substrat er grunnvattenskiptið tilgjaflegt
- II. Areas without groundwater resources worth mentioning**
 Grunnvatn er ekki tilgjaflegt
 Substrat er grunnvattenskiptið ekki tilgjaflegt
- III. Geological symbols**
 Grunnvattenskiptið er tilgjaflegt
 Grunnvattenskiptið er ekki tilgjaflegt
- | Symbol | Geology of Iceland names | Abkürzung geologischer Lithologien |
|--------|--------------------------|------------------------------------|
| 1 | Basalt | Bas |
| 2 | Granit | Gr |
| 3 | Diabas | Di |
| 4 | Andesit | And |
| 5 | Trachyand | Tr |
| 6 | Trachybas | Trb |
| 7 | Trachyand | Tr |
| 8 | Trachybas | Trb |
| 9 | Trachyand | Tr |
| 10 | Trachybas | Trb |
| 11 | Trachyand | Tr |
| 12 | Trachybas | Trb |
| 13 | Trachyand | Tr |
| 14 | Trachybas | Trb |
| 15 | Trachyand | Tr |
| 16 | Trachybas | Trb |
| 17 | Trachyand | Tr |
| 18 | Trachybas | Trb |
| 19 | Trachyand | Tr |
| 20 | Trachybas | Trb |
| 21 | Trachyand | Tr |
| 22 | Trachybas | Trb |
| 23 | Trachyand | Tr |
| 24 | Trachybas | Trb |
| 25 | Trachyand | Tr |
| 26 | Trachybas | Trb |
| 27 | Trachyand | Tr |
| 28 | Trachybas | Trb |
| 29 | Trachyand | Tr |
| 30 | Trachybas | Trb |
| 31 | Trachyand | Tr |
| 32 | Trachybas | Trb |
| 33 | Trachyand | Tr |
| 34 | Trachybas | Trb |
| 35 | Trachyand | Tr |
| 36 | Trachybas | Trb |
| 37 | Trachyand | Tr |
| 38 | Trachybas | Trb |
| 39 | Trachyand | Tr |
| 40 | Trachybas | Trb |
| 41 | Trachyand | Tr |
| 42 | Trachybas | Trb |
| 43 | Trachyand | Tr |
| 44 | Trachybas | Trb |
| 45 | Trachyand | Tr |
| 46 | Trachybas | Trb |
| 47 | Trachyand | Tr |
| 48 | Trachybas | Trb |
| 49 | Trachyand | Tr |
| 50 | Trachybas | Trb |
| 51 | Trachyand | Tr |
| 52 | Trachybas | Trb |
| 53 | Trachyand | Tr |
| 54 | Trachybas | Trb |
| 55 | Trachyand | Tr |
| 56 | Trachybas | Trb |
| 57 | Trachyand | Tr |
| 58 | Trachybas | Trb |
| 59 | Trachyand | Tr |
| 60 | Trachybas | Trb |
| 61 | Trachyand | Tr |
| 62 | Trachybas | Trb |
| 63 | Trachyand | Tr |
| 64 | Trachybas | Trb |
| 65 | Trachyand | Tr |
| 66 | Trachybas | Trb |
| 67 | Trachyand | Tr |
| 68 | Trachybas | Trb |
| 69 | Trachyand | Tr |
| 70 | Trachybas | Trb |
| 71 | Trachyand | Tr |
| 72 | Trachybas | Trb |
| 73 | Trachyand | Tr |
| 74 | Trachybas | Trb |
| 75 | Trachyand | Tr |
| 76 | Trachybas | Trb |
| 77 | Trachyand | Tr |
| 78 | Trachybas | Trb |
| 79 | Trachyand | Tr |
| 80 | Trachybas | Trb |
| 81 | Trachyand | Tr |
| 82 | Trachybas | Trb |
| 83 | Trachyand | Tr |
| 84 | Trachybas | Trb |
| 85 | Trachyand | Tr |
| 86 | Trachybas | Trb |
| 87 | Trachyand | Tr |
| 88 | Trachybas | Trb |
| 89 | Trachyand | Tr |
| 90 | Trachybas | Trb |
| 91 | Trachyand | Tr |
| 92 | Trachybas | Trb |
| 93 | Trachyand | Tr |
| 94 | Trachybas | Trb |
| 95 | Trachyand | Tr |
| 96 | Trachybas | Trb |
| 97 | Trachyand | Tr |
| 98 | Trachybas | Trb |
| 99 | Trachyand | Tr |
| 100 | Trachybas | Trb |

- Special signs - Setlin - Sæmile Signatur**
- IV. Particular notes on groundwater and springs**
 Sérstök ábendingar um grunnvatn og kjarla
 Sæmile ábendingar um Grundvattensorkommt og kjarla
- V. Surface waters**
 Dærfvatnsgröfjur
- VI. Artificial works**
 Sæmile ábendingar um vassverkun
- VII. Geological symbols**
 Sæmile ábendingar um geologískar ták

Scale: 1:500,000
 Hannover 1980
 0 50 100
 km

Scale: 1:500,000
 Hannover 1980
 0 50 100
 km

051074

Fitjueigindir

- Dagsetning heimildar
 - Dagsetning leiðréttingar
 - Gagna eigandi
 - Heimild
 - Innsetningardagsetning
 - Nákvæmni í fleti
 - Vinnsluferli fitju
 - Númer grunnvatnshlots
 - Nafn grunnvatnshlots
 - Tenging verndarsvæða
 - Skali
 - Megingerð vatnsveitis
 - Lekt
 - Flatarmál
- ÍST120
- ESB
- 